

# Moyne Shire Coastal Action Plan

## Interim Review

*March 2005*

Prepared for the Western Coastal Board by:

**Pragmatic**  
*Environmental Solutions*

Introduction .....	3
Background .....	4
Assessment.....	7
Qualitative Report.....	7
Implementation of the Plan .....	7
Usefulness of the Plan .....	7
Quantitative Report.....	9
Progress in implementing the actions of the Moyne Shire CAP .....	9
Conclusions.....	12
Appendices .....	13

## Introduction

The Victorian Coastal Strategy<sup>1</sup>, developed in accordance with the *Coastal Management Act* 1995, establishes the overall framework for planning and management of the Victorian coast. Coastal Action Plans (CAPs) are developed by the relevant Coastal Boards to assist implementation of the VCS on a regional, local or issues-based level. The CAPs relevant to the Moyne Shire are as follows:

- South West Victoria Regional CAP;<sup>2</sup>
- South West Estuaries CAP;<sup>3</sup>and
- Moyne Shire CAP.<sup>4</sup>

The CAPs provide for strategic coastal planning for the region or local area under the larger framework of the VCS and therefore take a long-term strategic view, clarifying directions for future use and identifying key actions required to achieve preferred outcomes. CAPs also provide managers with a priority ranking for each action to assist with the prioritisation of works.

The intended lifespan of a CAP is approximately five years. During the lifespan of the CAP it should ideally be the subject of an interim review, or progress report. Towards the end of the five years, a CAP will be the subject of a major qualitative and quantitative review. The outcomes of the reviews will assist the Western Coastal Board to determine whether a CAP is required for a particular area and whether it needs to be amended or rewritten for the next five years.

The Moyne Shire CAP (hereafter referred to as “the Plan”) was endorsed in June 2001 by the Western Coastal Board and was the subject of a preliminary review in its first year of implementation by the Board in October 2002 (along with Warrnambool, Lorne and

---

<sup>1</sup> *Victorian Coastal Strategy 2002* State Government and Victorian Coastal Council

<sup>2</sup> *South West Victoria Regional Coastal Action Plan 2002* State Government and Western Coastal Board

<sup>3</sup> *South West Estuaries Coastal Action Plan 2002* State Government and Western Coastal Board

<sup>4</sup> *Moyne Shire Coastal Action Plan 2001* Western Coastal Board and Moyne Shire Council

Anglesea CAPs). This is the fourth year of the intended five year lifespan of the Plan, and this report provides an interim review before its major review in 2005/06. The purpose of this review is to assess the effectiveness of the process and determine the level of its success in guiding the implementation of the VCS to date.

The effectiveness of the Plan has been assessed using measures of progress in implementation of the Plan's recommended actions, and qualitative information gathered through discussions with relevant managers regarding how useful they find the Plan.

It should be noted that while the Regional CAPs are intended to provide direction for the preparation of local CAPs, preparation of the Moyne CAP preceded that of the Regional CAPs. Therefore, there are some actions within the Regional CAPs that are relevant to the Moyne Shire coastal zone but do not exist within the Moyne CAP document. The focus of this interim review is the Moyne CAP and its actions. Recommendations to improve linkage between the Moyne CAP and Regional CAP documents in the future are provided in the "Conclusions" section of this document.

## **Background**

The Moyne Shire includes approximately 90km of Victorian coastline from the Curdies Inlet at Peterborough to near Boundary Road, west of Lake Yambuk. The coastal zone has many significant cultural, historic and environmental values, and inappropriate use in the past has led to damage to these values in some parts of the zone.

To promote long-term protection and management of this coastal zone, the Moyne Shire Council and the Department of Sustainability and Environment developed and adopted the Moyne Coastal Study (MCS) in 1996. The Plan builds on recommendations of the MCS, while presenting a framework for the development and management of the Moyne Coast that is consistent with the VCS. It provides descriptions of coastal issues, objectives and recommendations for the strategic management of this coastal zone. It also identifies funding sources and implementation responsibilities for the recommendations therein, and identifies the priority of each recommendation. The

preparation of the Plan involved extensive consultation with members of the Moyne community, interest groups and government departments.

The Plan intends to provide the support and direction for the protection of the Moyne coastal zone's significant cultural, environmental and historical values, and to assist in providing guidelines and recommendations for tourism, recreation and development opportunities.

The MSC has primary responsibility to coordinate the implementation of the CAP and a representative of the Council assisted with the development of this interim review. As the MSC has lead responsibility for the implementation of the majority of the actions in the Plan, this document largely makes reference to the MSC. However, the comments are also relevant to the few agencies that have lead responsibility for the small number of actions for which other agencies have lead responsibility for implementing. These agencies include the Department of Sustainability and Environment, Parks Victoria, South West Water Authority and Glenelg Hopkins Catchment Management Authority.

The general objectives of the Plan provide the framework necessary for the protection and appropriate use of the Moyne coastal zone and they are to:

- Enhance biodiversity by protecting functioning ecosystems and significant native flora and fauna habitat.
- Protect Aboriginal cultural sites and places and non-Indigenous heritage.
- Conserve natural and historic features of National, State and local significance.
- Provide visitor facilities and infrastructure that meets demand, minimises environmental impact and is consistent with the objective of the *Siting and Design Guidelines for Structures on the Victorian Coast 1998*.
- Continue to provide appropriately trained coastal planning and community support staff.
- Continue to support the activities of volunteer groups and organisations such as Coast Action / Coast Care.
- Enhance the quality of life for local residents.
- Provide for a diverse range of recreational and tourism opportunities, including the provision of infrastructure to extend and expand the tourist season and experience.

- Encourage suitable commercial development that recognises the natural attributes of the Moyne coast for residents and visitors.
- Provide suitable access to coastal locations including for the disabled in some areas.
- Protect agricultural activities of farmers adjoining coastal land that does not threaten coastal processes or landscapes.

## **Assessment**

This review provides both a qualitative assessment and a quantitative assessment of the effectiveness of the Plan.

### ***Qualitative Report***

There are several organisations responsible for implementing the Plan; however, the Moyne Shire Council has lead responsibility for the implementation of the majority of the recommended actions (approximately 90%). In order to determine how useful the Plan has been to date, a representative of the MSC was interviewed and asked a series of questions relating to both the usefulness of the Plan. The qualitative report is based on the MSC representative's responses and is provided below.

### **Implementation of the Plan**

Coastal planning is undertaken by a small group within the MSC. Approximately 18% of the Plan's recommended actions have been fully implemented, or are continually being implemented as ongoing priorities. Of those actions that have been implemented, or that the MSC intends to implement in the future, most are considered to be priorities by the MSC, regardless of their inclusion in the Plan. The actions in the Plan are not used by the MSC to determine priority directions or works.

### **Usefulness of the Plan**

An indicator of the degree of usefulness of the Plan is the level of uptake by relevant managers. While the Plan effectively reflects the VCS directions at a local level, it is not used to do so. When determining strategic direction, the MSC applies the VCS document (particularly the hierarchy of principles section) to Moyne coastal zone issues to determine priorities and preferred direction and outcomes. The reason that the VCS is

used instead of the Plan for this purpose is that the MSC finds that it is more readable than the Plan, and is easy to apply at a local level.

The MSC uses the Plan primarily as a reference and a support for internal and external funding bids for projects that are nominated as a priority by the community and the MSC planners. Projects that the MSC seeks to implement can usually be found to align relatively well with recommendations within the Plan. The MSC reported that the Plan may be more useful if it's recommendations were more prescriptive.

## ***Quantitative Report***

The quantitative assessment of this review focuses on the progress of the implementation of CAP actions since endorsement, and the measures used are as follows:

- the degree to which the recommendations have been undertaken, and
- the proportion of actions undertaken successfully according to priority rating.

Appendix A comprises a table listing the recommendations of the Moyne Shire CAP with indicators of progress. Additionally, the table provides the reasons for the action not being fully implemented (see “Status - primary limiting factors” column) and describes the future intentions for implementation as described by the MSC and other lead agencies. Priority ratings for each recommendation are also listed.

### **Progress in implementing the actions of the Moyne Shire CAP**

#### Degree to which the recommended actions have been implemented

Actions that have been completed or are currently being implemented comprise over half of the total actions listed in the Plan.

Of the total number of actions in the Plan:

- Approximately 5% of actions are completed;
- 33% of actions are partially completed;
- 13% of actions are being undertaken as ongoing initiatives; and
- 49% have not been started (these may include actions that are being planned through the preparation of other documentation).

Figure 1 in Appendix B depicts progress according to action implementation.

### Implementation within specified timeframe

Approximately 60% of actions in the Plan have not been implemented within the timeframe specified by priority rating. Of the 23 actions that are running behind schedule:

- 31% are rated as a “Very High” priority;
- 65% of actions are rated as a “High” priority; and
- 4% of actions are rated as a “Medium” priority.

Figure 2 in Appendix 2 shows the proportion of behind-schedule actions according to priority rating. The specified timeframes for each priority rating are also provided.

### Primary factors limiting implementation of actions

The factors identified by lead agencies as limiting the implementation of actions are outlined below. Figure 3 in Appendix B depicts proportion of actions lacking full implementation according to reason provided by lead agencies.

#### *Lack of funding*

The most common reason provided for not having implemented actions to date was “lack of funding” (this applies to 53% of the actions that are not fully implemented).

#### *Dependence upon other documents*

Dependence upon the finalisation and/or implementation of risk assessments, reports, strategies, plans and other documents (as either providing information to undertake actions or to use as an alternative mechanism for implementing the action) was offered as a reason for lack of implementation for 9 actions (28% of the total that are not fully implemented). In most cases, it was reported that the action will be implemented, but not within the timeframe specified by priority rating. These documents include the Planning Scheme Amendments (due to be completed by September 2006) and the Moyne Shire

Coastal Access Plan (which will promote a strategic approach to the provision of access in the Moyne coastal zone, and is due to be completed by June 2005).

*Priority of actions is being reviewed by lead agency*

A small proportion (13%) of actions are not considered a priority by the lead agencies and these actions are therefore not being undertaken until other factors that are considered a higher priority are addressed.

*Role coordination issues*

Approximately 6% of actions are on hold or have not started due to problems with the identification and/or communication of which agency should be taking the lead role in implementation.

## Conclusions

The qualitative assessment shows that the MSC finds the CAP to be useful as a support for funding bids, but not in providing strategic direction for coastal management. More than half of the recommended actions in the Plan have been completed, or are in the process of being undertaken.

It is seen as worthwhile to continue with the Coastal Action Plan process, but the usefulness of the Plan could be improved. In order to continue with the process more effectively, the following is recommended:

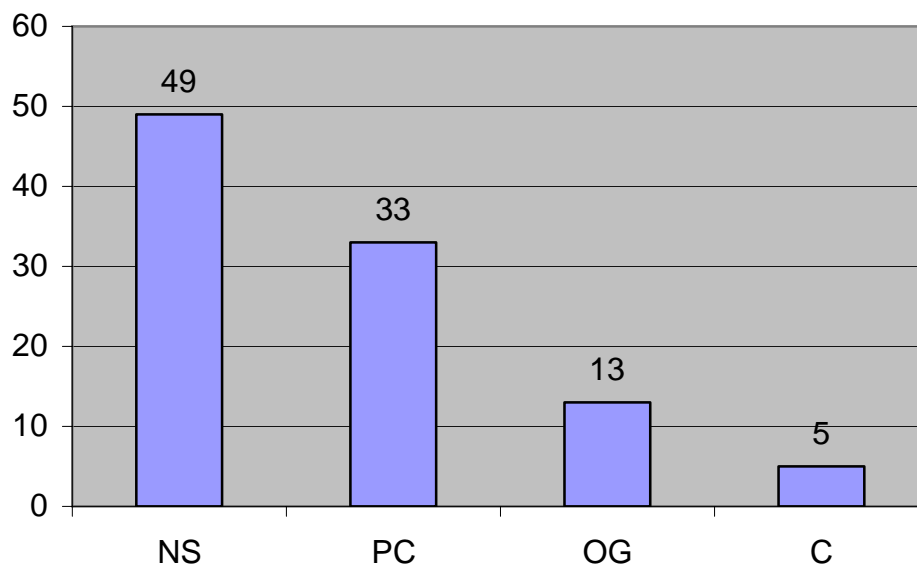
1. Preparation of a useful interim document to replace the final year of the Plan, providing guidance to the lead agencies to follow up outstanding priority actions from the existing Plan. This document could take the form of an Implementation Plan and have the intended lifespan of one year (ie until the next five-year Moyne Coastal Action Plan is developed).
2. Additional funding is available to implement the Plan's actions (particularly the development of Management Plans).

In order to prepare a more useful subsequent five-year Moyne Coastal Action Plan, it is recommended that the following issues are addressed:

- a. Update recommended actions, including those that are consistent with the Regional Coastal Action Plans;
- b. Improve the consistency of the level of prescription of the Plan's actions;
- c. Include the principles provided in the VCS;
- d. Delineate between infrastructure-based actions and environmental protection-based actions in the Plan; and
- e. Improve the readability and relevance of the Plan to local Council.

## Appendices

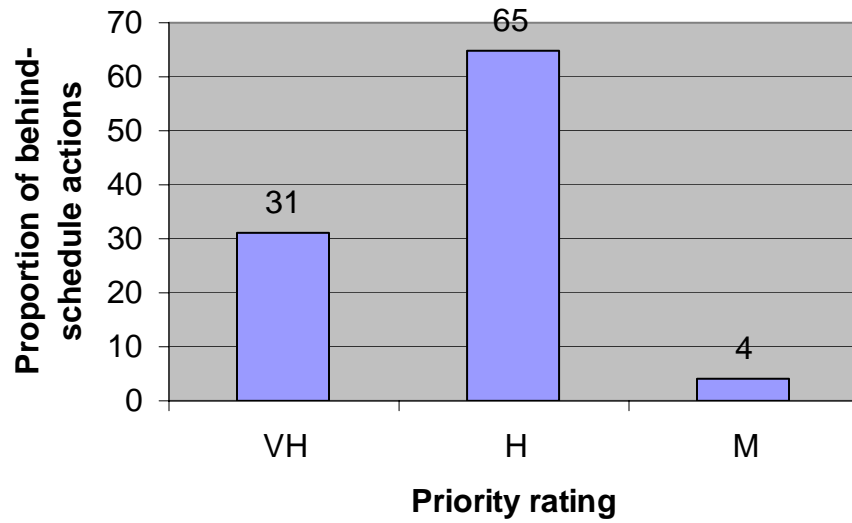
**Figure 1: Progress of implementation**



Key to Figure 1

Indicator of status of progress	Description
NS	Not started (but may be partially or fully implemented through different mechanism)
PC	Partially completed
OG	Ongoing action
C	Completed

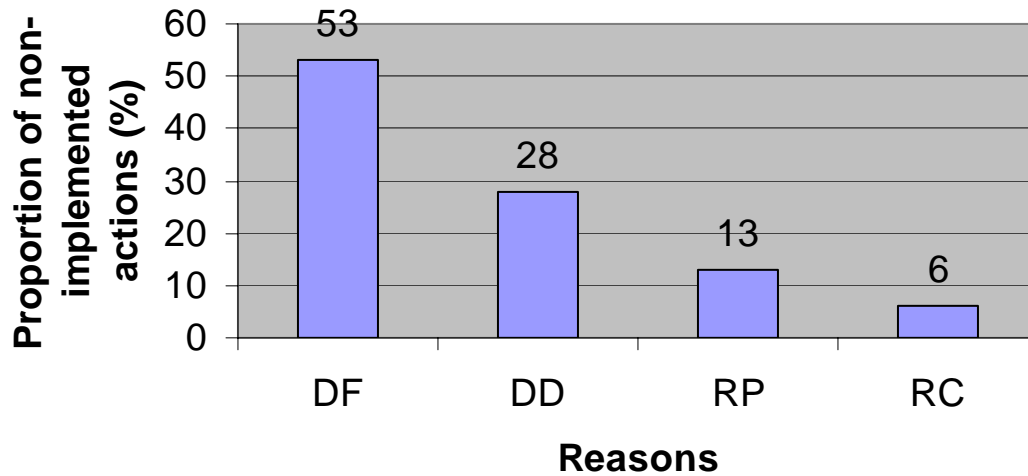
**Figure 2: Proportion of behind-schedule actions according to priority rating**



Key to Figure 2

Rating	To be implemented within..	To be implemented by..
VH	One year of the Plan's endorsement	2002
H	Two to three years	2003 to 2004
M	Three to five years	2004 to 2006

**Figure 3: Reasons for lack of full implementation**



Key to Figure 3

Reason	Description
DF	Dependent upon funding
DD	Dependent upon preparation / finalisation of other documents
RP	Lead agency reviewing priority of action
RC	Lead role coordination issues